



COPPABELLA Wind Farm

Project Briefing Community Consultative Committee

5th October 2017

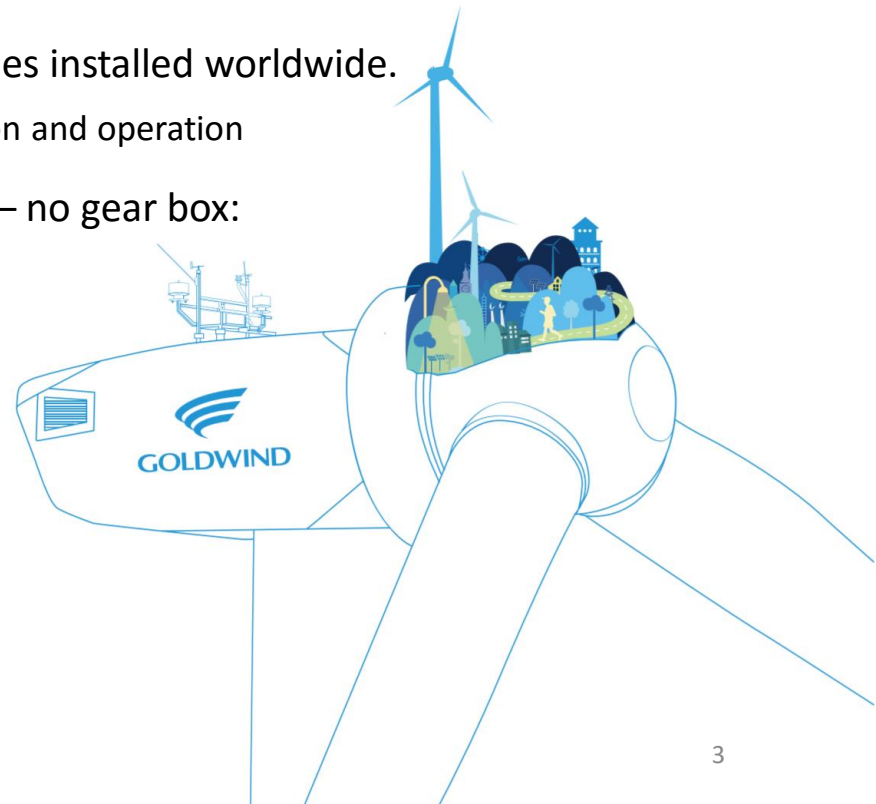
Contents

- Goldwind - Overview
- Coppabella Wind Farm
 - Project Overview
 - Modification Application
 - Host Landowners and Neighbours
 - Community engagement
 - Project benefits

Goldwind - Overview

Goldwind Global

- Goldwind is a global leader in manufacturing of wind turbines working across six continents.
- Strong research and development capabilities.
- 20+ years of experience in the wind industry.
- 32+ GW of power installed and over 20,000 turbines installed worldwide.
 - Extensive practical experience in siting, construction and operation
- Leader in permanent magnet drive wind turbines – no gear box:
 - increased efficiency,
 - reduced maintenance costs and downtime.



Goldwind - Overview

Goldwind Australia

- Established in 2009
- Maintains offices in Sydney, Melbourne and 3 Wind Farm Site offices
- Has approximately 130 highly experienced employees.
- Partners with engineering, transport and earthworks contractors for delivery

Goldwind Australia Projects – over 1.7 GW operating, planned or under construction across Australia

Operating

- | | | |
|----------------|------------------|-----|
| • Mortons Lane | 20 MW wind farm | VIC |
| • Gullen Range | 165 MW wind farm | NSW |

Under Construction

- | | | |
|--------------------|------------------|-----|
| • White Rock | 175 MW wind farm | NSW |
| • Gullen Solar | 10 MW solar farm | NSW |
| • White Rock Solar | 20 MW solar farm | NSW |

Construction in 2017 / 2018

- | | | |
|------------------|------------------|-----|
| • Moorabool | 385 MW wind farm | VIC |
| • Stockyard Hill | 530 MW wind farm | VIC |
| • Cattle Hill | 144 MW wind farm | TAS |
| • Coppabella | 150 MW wind farm | NSW |



Background

- Development Application in 2009 by Epuron
- Extended review process
- Reduced project approved in March 2016

NSW Development Consent (SSD 6698)

- 79 wind turbines & associated infrastructure

Commonwealth EPBC Approval (2013/7002)

Grid Connection

- 132kV TransGrid powerline between Yass & Murrumburrah

Goldwind acquisition in Feb 2017

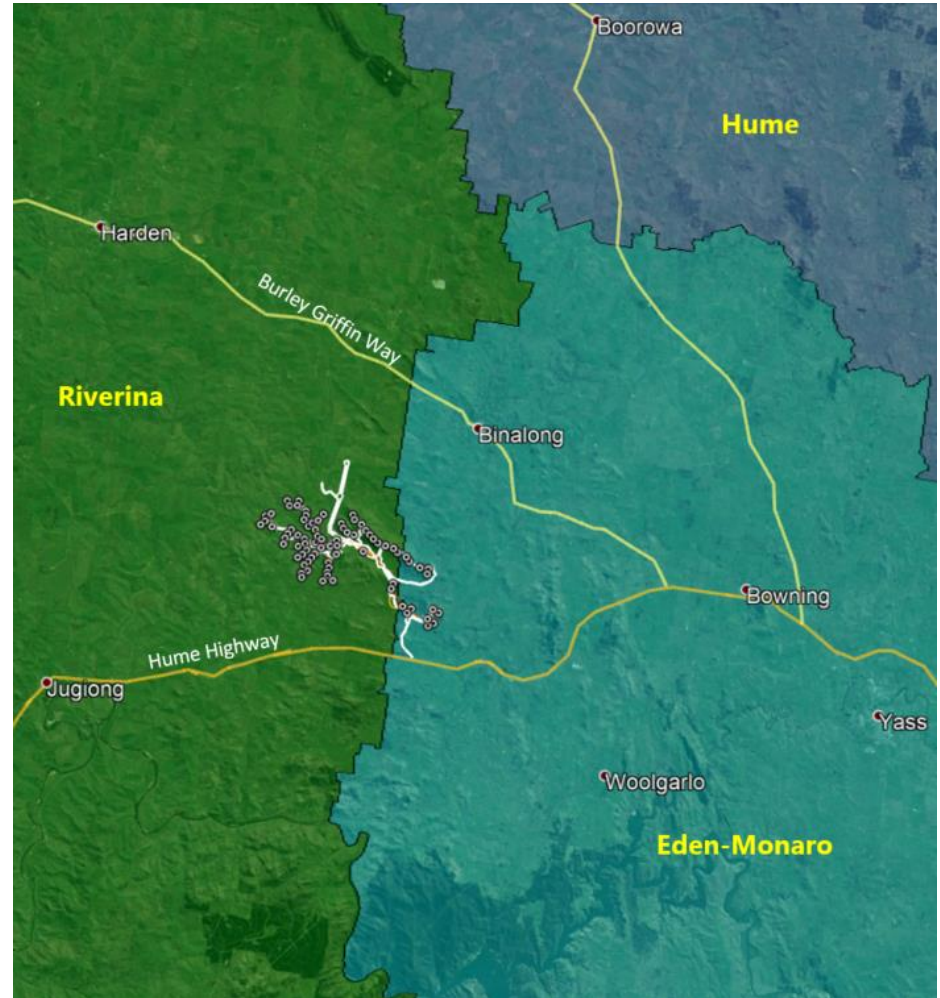
Landowners & Community

- 11 host landowners
- Low density of non-host neighbouring properties:
 - 0 residences within 0-2km
 - 9 residences within 2-3km
 - 13 residences within 3-4km
 - 29 residences within 4-5km (includes Bookham)

Community engagement now underway

A new industry and opportunity for the region

Construction planned to commence in 2018



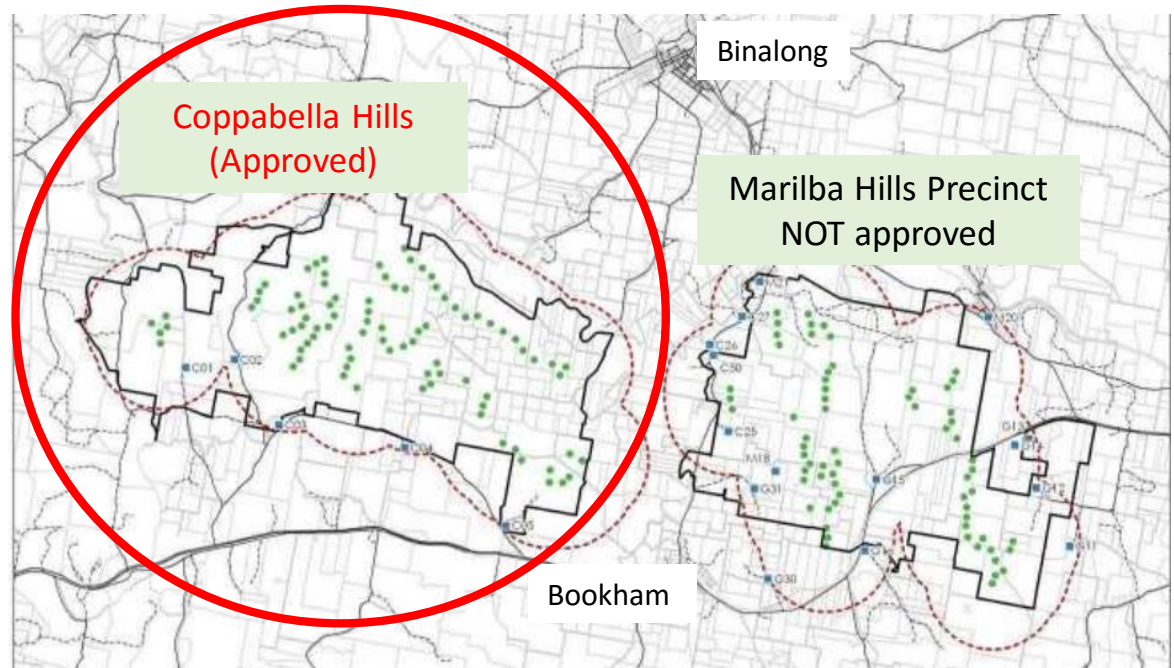
➤ Coppabella Precinct Approval

The 2009 development application for the Yass Valley Wind Farm involved 152 wind turbines over 2 major areas.

After significant community consultation, Coppabella precinct was approved with 79 turbines.

Project Name Change

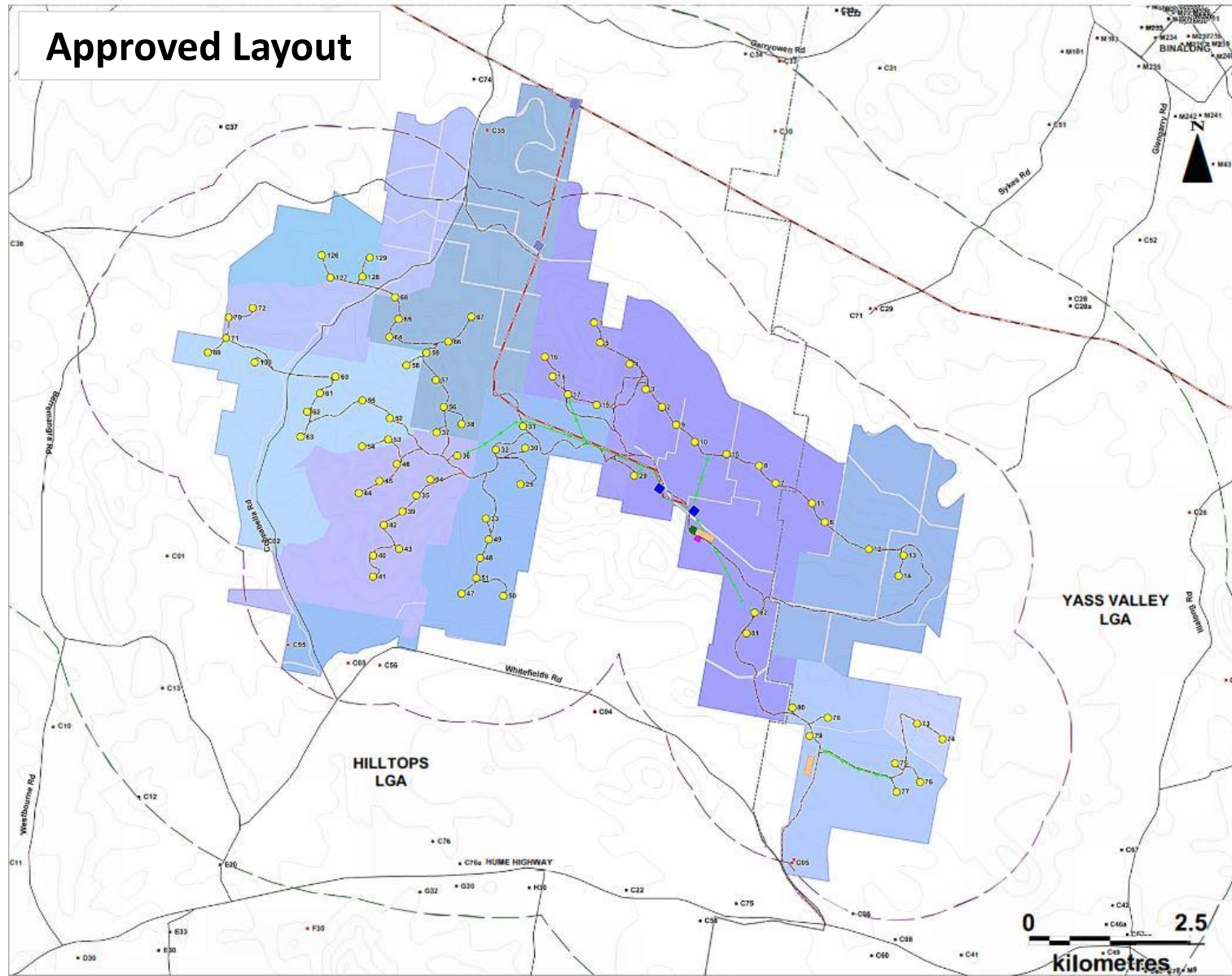
- The project has changed substantially from original submission.
- The new name for the wind farm more accurately reflects the geographic location of the project.



YASS VALLEY
Wind Farm

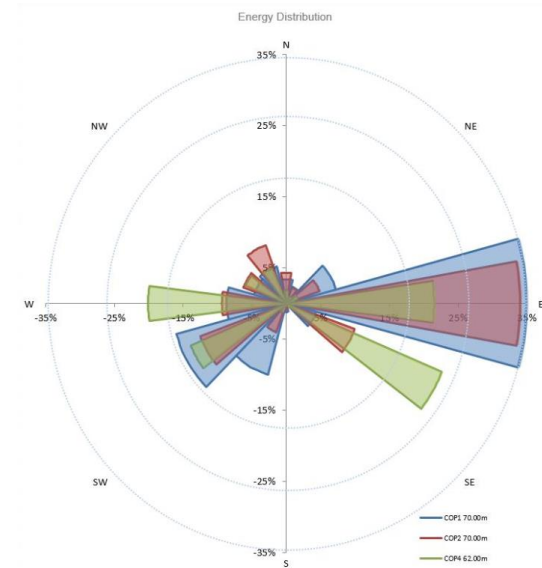


COPPABELLA
Wind Farm



➤ Energy Assessment - Key Stats

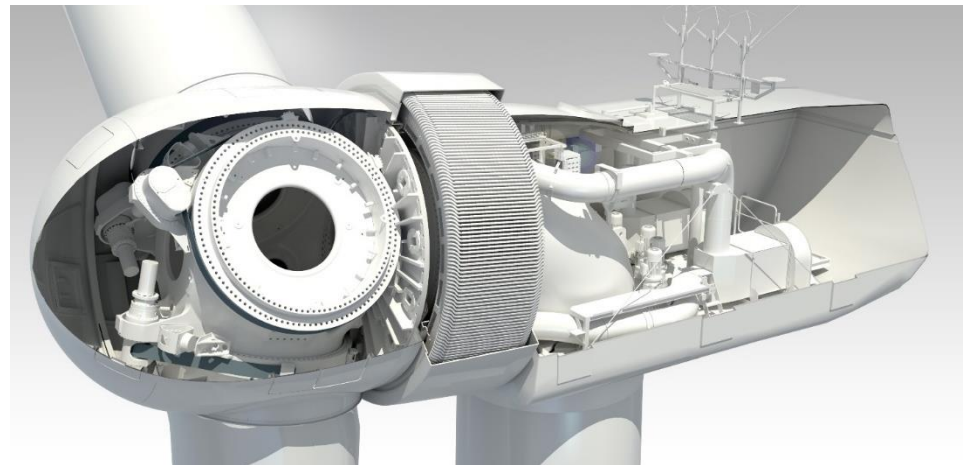
- 7.5m/s (27 km/h):
 - Ave. wind speed at hub height across the site
- 41-45%:
 - Capacity Factor (NCF)
- 567.5 GWh:
 - Annual energy production
 - Assuming 150MW base case
 - Approx. 80,000 NSW homes energy needs*



➤ GW3s Wind Turbine

The GW140/3.4MW is currently being assessed as ideal for the site:

- Permanent magnet direct drive design
- No high-speed gearbox
- High efficiency



➤ Coppabella Development

- Development of up to 79 turbines and associated infrastructure
- Existing Consent (based on EA from 2009) includes constraints that lead to a sub-optimal development

❖ **Modification Application:**

- A modified approval is needed to enable optimum development, efficient operation and competitively priced power using currently available technology
- Detailed engineering design and a range of planning studies have been undertaken to determine a practical design and this provides the basis for the modification application
- Goldwind seeks to be in a position to commence construction in early 2018

➤ Proposed Modification Application

The modification to the approvals will focus on 2 main areas:

(1) Internal Roads and Hardstands

- Variation in the road and earthworks design is required as original road design did not allow for earthworks around road. Due to the terrain this is not realistic.
- Variation to increase vegetation impact allowance due to the increased earthworks footprint. This increase is from 68.3 Ha to 180.9 Ha.
- This impacted footprint is predominantly made of of grasslands and includes areas that will be temporarily impacted and then rehabilitated after construction.

(2) Increased Tip Height

- Due to the lengthy process for the project to get approved, the allowable wind turbine envelope does not allow for a competitive modern wind turbine to be used on the site.
- As an increase of overall tip height from 150m to 171m is sought.

Other modifications

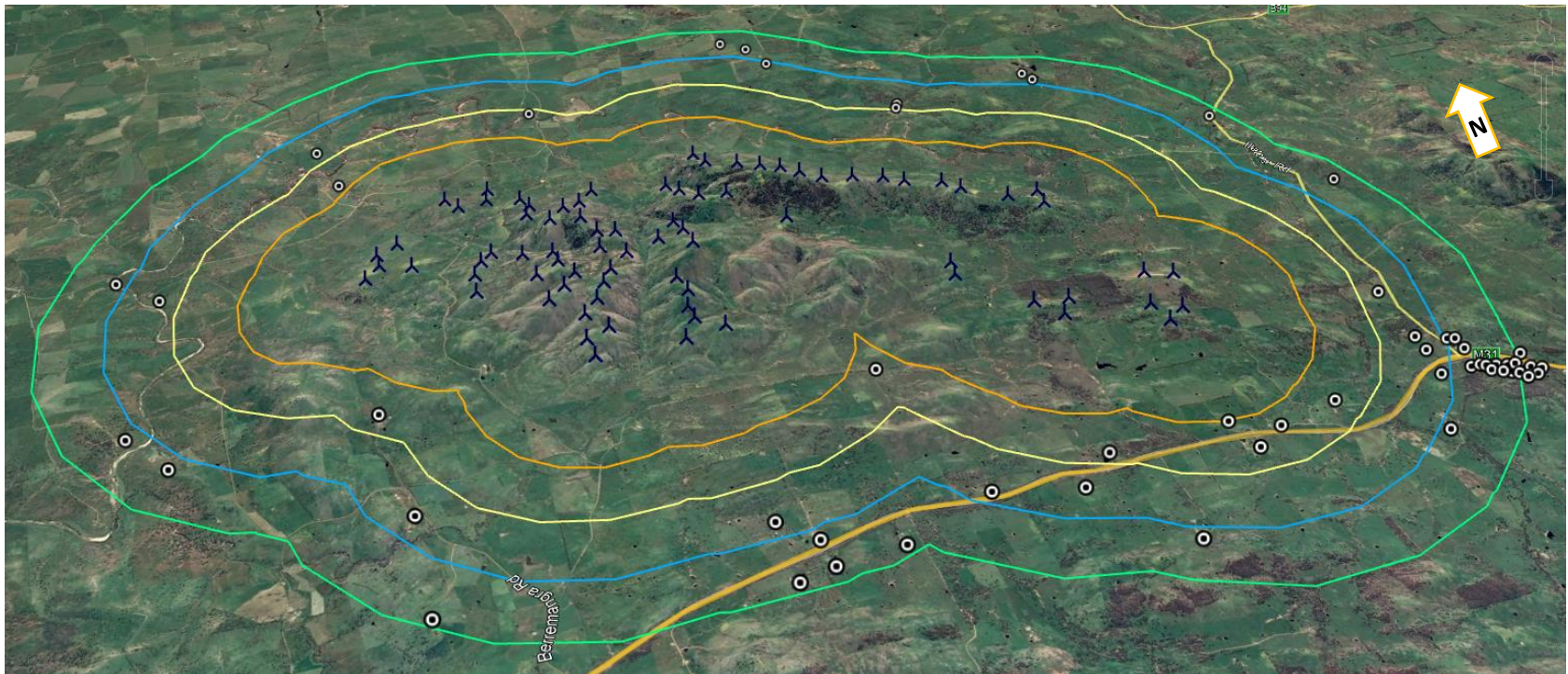
- Additional locations for ancillary infrastructure
- Allow replacement of approved overhead with underground 33kV collections circuits
- Allow staging of project
- Minor changes to Conditions of Consent as required

Host Landowners

- Add value to farms without displacing existing practices
- Agreements with landowners to diversify income stream, allowing for drought proofing etc.

Neighbours

- Neighbour engagement strategy established
- Focus on establishing relationships with near neighbours to 5km
- Benefit sharing through neighbour agreements with neighbours out to a wider distance than typical of the industry.



Long term involvement in the community

- Stakeholder and Community Engagement Plan established
- Coppabella Wind Farm will be a long-term member and contributor of the community
- Aims to keep a proactive, open dialogue with the local residents, stakeholders, and the wider community to ensure successful information exchange, consultation and engagement.

Local Information Centre

- Local information centre to be established and local community relations officer to be appointed to manage interface with the local community
- Source of information on the project, wind energy etc.

Community Consultative Committee

- purpose of the CCC is to provide a forum for open discussion between project representatives, the community, local councils and other stakeholders.
- Quarterly meetings to be held locally

Communication Mechanisms

- Newsletters for those out to 10km from project and self-selected to be on the mailing list
- Website 1800 number (24 hours)
- info@ email address
- One-on-one meetings as required
- Letterbox drops for information sharing on specific matters



*Local Community Relations Officer at the
White Rock Wind Farm Information Centre in
Glen Innes, NSW*

Sponsorship of local community initiatives and events

- Tool to facilitate long term, sustainable relationships and share benefits of the project within the community
- Discussions undertaken with over 15 different community groups within the area, provision of over \$30k financial support to date.

Community Enhancement Fund

- \$2,500 (CPI adjusted) per installed turbine on commencement of operations
- Development Consent Condition to enter into VPAs with local councils

Near Neighbour benefit sharing

- Agreements offered to neighbours with residences within 5km of approved turbine locations.



Local Business Participation Program

- Three stage process to identify capability and capacity in the local community and maximise opportunities for local suppliers to participate in the project.
- Coppabella Wind Farm is committed to local sourcing where feasible.
- The project is expected to employ 150-200 staff during construction peaks and approximately 10-15 permanent staff when fully operational.

Project Investment

- Approximately \$250-300 million expected overall project investment.
- Approximately \$25-30million to be spent locally during construction.



Operations and Maintenance team at White Rock Wind Farm, Northern NSW.